



Passenger / Hospital Elevator Cabin Designs



Since 1992

WE ARE HERE FOR YOU

*Warmest greetings from
Asia Schneider (Thailand) Co., Ltd.*

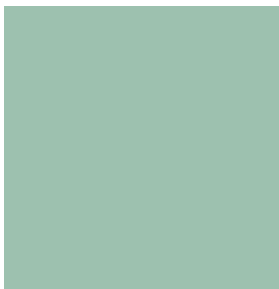
*We install and maintain elevators and escalators,
and solve their related problems professionally.*

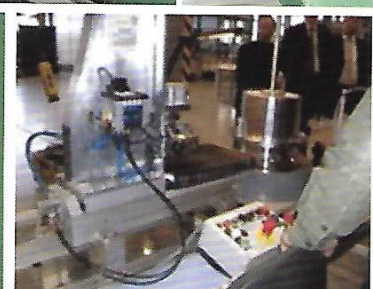
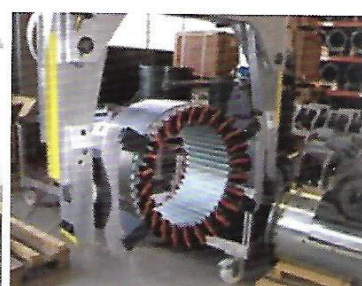
*Provide our assistance and technical know-how
to ensure their safety and smooth-running.*

*Practise high business ethics and safety standards
with network throughout Asia Pacific and Europe.*

*Offer long term solutions at competitive price
to give the best value to our clients.*

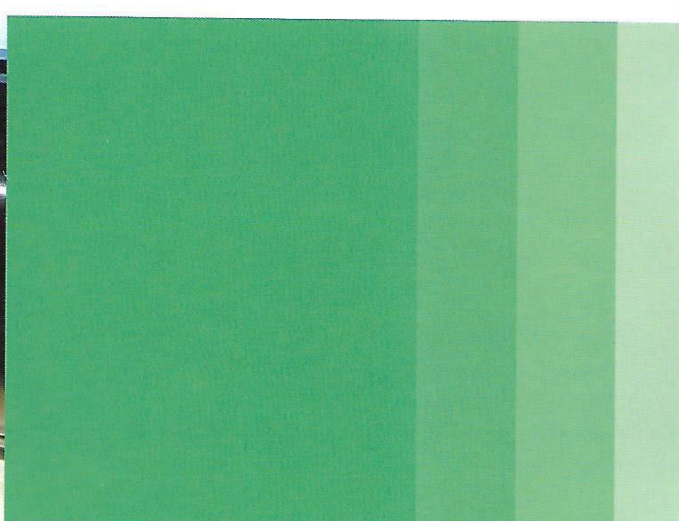
We Keep Moving Forward





Never Compromise on Quality and Safety

Asia Schneider (Thailand) Co., Ltd. has always stood for top-quality products and safety. Today with the availability of the low-noise, reliable and patented elevator brakes from Mayr®, we are taking our safety standards to a higher level. These premium brakes from the world market leader in this field are used in all kinds of elevators throughout the world. Wherever people are moved by elevators, from skyscrapers to ships, these brakes ensure their safety at all times.



OUR COMPANY

Asia Schneider (Thailand) Co., Ltd., with its head office in Bangkok, is a company that specializes in manufacturing, assembling and maintaining elevator controllers. With our partner from Germany, we produce controllers that are trusted by elevator companies for their reliability, high flexibility and durability.

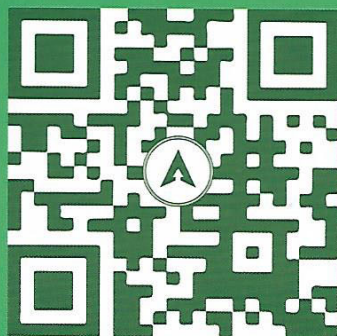
We also provide comprehensive and effective services for new installations, maintenance and modernization of all types of elevators and escalators. With our expertise and many years of hands-on experience, we are ready and confident to serve the needs and requirements of our customers. Our team of well-trained and dedicated personnel continuously strive to innovate and develop new solutions to improve efficiency, reduce cost and increase productivity.



We Keep Moving Forward

A handwritten signature in black ink, appearing to read 'Raymond C.S. Chai'.

Raymond C.S. Chai
Managing Director



Standard Cabin for Passenger / Hospital Elevator



ASP-01

CAR CEILING
ASC-G-01 Integrated Hairline Stainless Steel
with LED Lighting

CAR WALL
304 Hairline Stainless Steel

CAR DOOR
304 Hairline Stainless Steel

LANDING DOOR
304 Hairline Stainless Steel

COP & HOP
304 Hairline Stainless Steel with Dot-Matrix LED Screen
and ASB-M-01 push button

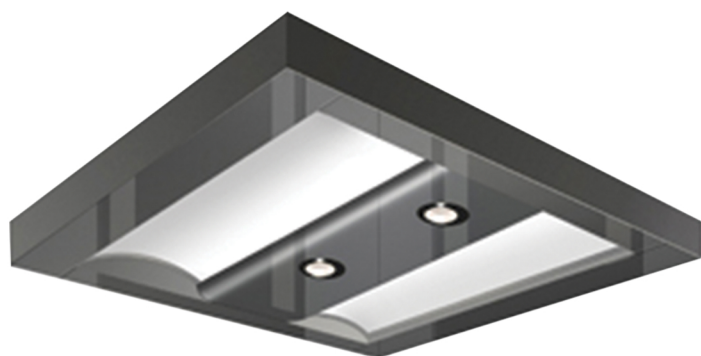
CAR FLOOR
ASF-G-01 PVC Floor

Car Ceiling

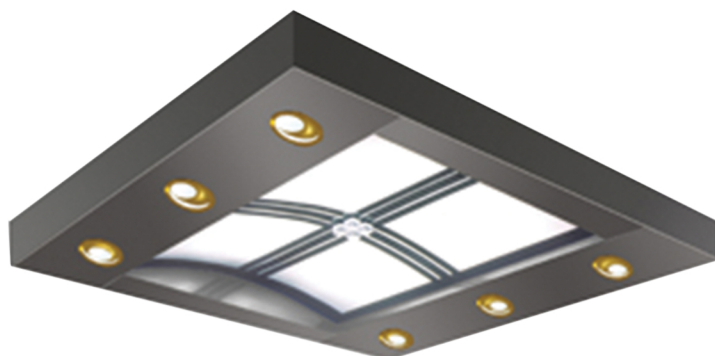
ASC-G-01



ASC-G-02



ASC-G-03



ASC-N-01



ASC-N-02



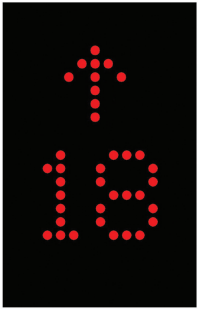
Above ceilings are made of integrated hairline stainless steel with LED lighting

ASC-N-03



Painted steel with LED lighting

DISPLAY TYPES



DOT-MATRIX



BLUE-SEGMENT
LCD (OPTIONAL)

PUSH BUTTONS



ASB-M-01



ASB-M-02



ASB-M-03



ASB-M-04



ASB-M-05



STANDARD



OPTIONAL

*Actual Product might differ from pictures.

AS-A-HOP 01
Hairline Stainless Steel with
Dot-Matrix LCD Display

AS-A-HOP 02
Hairline Stainless Steel with
Blue-Segment LCD Display

ASB-M-01
Round Hairline Stainless Steel
with Braille button.

ASB-M-03
Round Hairline Stainless Steel
with Braille button.

AS-A-COP 01
Hairline Stainless Steel with
Dot-Matrix LCD Display

AS-A-COP 02
Hairline Stainless Steel with
Blue-Segment LCD Display

ASB-M-02
Round Hairline Stainless Steel
with Goldish background color

ASB-M-04
Square Hairline Stainless Steel.

ASB-M-05
Square Hairline Stainless Steel
with Braille button.

Optional Cabin for Passenger / Hospital Elevator

ASP-10



Ceiling:	Hairline stainless steel + acrylic + downlights
Car wall:	Hairline stainless steel, Mirror stainless steel + Mirror etching stainless steel
Handrail:	Brushed stainless steel round tube
Floor:	PVC

ASP-11



Ceiling:	Hairline stainless steel + acrylic + downlights
Car wall:	Black Mirror stainless steel + Mirror etching stainless steel
Handrail:	Hairline stainless steel flat handrail
Floor:	PVC

ASP-21



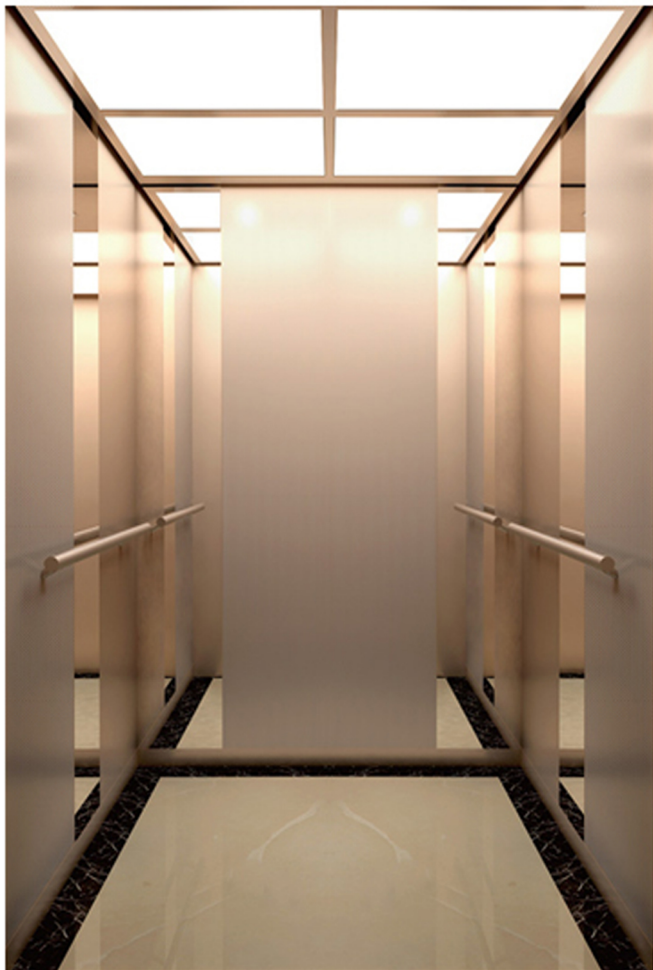
Ceiling:	Ti-gold stainless steel frame with acrylic craft board
Cabin:	Ti-gold mirror stainless steel, Ti-gold mirror etching
Handrail:	Ti-gold stainless steel and wooden handrail
Floor:	PVC

ASP-22



Ceiling:	Mirror titanium stainless steel + acrylic + downlights
Front wall:	Titanium-plating stainless steel
Side wall:	Titanium-plating stainless steel + composite material
Rear wall:	Titanium-plating stainless steel + mirror etched titanium stainless steel
Floor:	PVC

ASP-31



Ceiling: Rose-gold Mirror ST.ST. + Acrylic
 Rear Wall: Rose-gold Hairline ST. ST. Etching + Rose-gold Mirror ST.ST.
 Side Wall: Rose-gold Hairline ST. ST. Etching + Rose-gold Mirror ST.ST.
 Handrail: Rose Gold Round ST.ST. Tube
 Skirting: Hairline ST. ST.
 Flooring: Marble
 Front Wall: Rose-gold Hairline ST. ST.

ASP-32



Ceiling: Champagne Quartz Blasted ST.ST. + Acrylic + LED Spotlight
 Rear Wall: Champagne Quartz Blasted ST.ST. + Champagne Quartz Mirror ST.ST.
 Side Wall: Champagne Quartz Blasted ST.ST. + Champagne Quartz Mirror ST.ST.
 Handrail: ST.ST. Tube
 Skirting: Champagne Quartz Blasted ST.ST.
 Flooring: Marble
 Front Wall : Champagne Quartz Blasted ST.ST.



Head Office : 363, 365 Sukhapiban 5, Tarang, Bangkhen, Bangkok 10220 Thailand

Hotline : +(66) 2 948 1663 | Tel. No.: +(66) 2 948 1025 | Fax No. +(66) 2 948 1027

Factory Address : 99/1 Moo 5, Thakanoon, Thongphaphoom, Kanchanaburi 71180 Thailand

Website : www.asia-schneider.com | E-mail : contact@asia-schneider.com